



All parts are made in South Korea!



Address 510, 83, Gongdan-ro 1-gil, Waegwan-eup,
Chilgok-gun, Gyeongsangbuk-do, Republic of Korea
(Gyeongbuk hightechvilage)
TEL +82-54-976-1900
FAX +82-54-976-9876
E-Mail kimd1272@gmail.com
Web <http://pollen-trap.com>

Bee Flower pollen trap

Innovative bee flower pollen trap (collector) with the elastic stainless steel wire entry and configurable structure of bees entrance



Product Overview

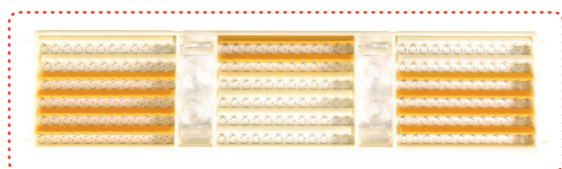
The pollen trap is a tool for collecting flower pollen from Honey bees. Instead of the plastic doorway structure of the existing pollen traps, BEE FLOWER pollen traps have been applied with an innovative idea that the structure of the springy stainless steel wire doorway and doorway can be changed. BEE FLOWER Pollen traps hang in the entrance of a bee hive. (Regardless of whether it's a standard 8 or 10 frame, it can be used as long as there's an entrance reducer)

Give your bees comfort!



Advantage of BEEFLOWER pollen collecting gate

- A polished stainless door with a thin diameter (0.25 mm)**
 → It's thin and soft, so it **minimizes the stress and damage** that bees get when they pass through the doorway!
- It adopts the spring modularization technology of insert method**
 → It's possible to change the configuration freely because it is detachable
 → It's easy to clean after use! Completed the water pressure test, no deformation with a brush.
- Drone exits (transparent cone shape)**
 → Keep bees in and out more easily.



- Select your doorway ring size -

(The size means a diameter)

- 4.4:** For Asian honeybees (Apis Cerana)
- 4.6:** Even the small pollen grains collected
- 4.8:** Only the large grains collected

▶ The size of the doorway 4.6~4.8 is based on Apis Mellifera / 3 types of pollen traps use all the same spring module

Why should we use the expensive pollen trap with "wire ring entrances?"

Comparison factors	plastic entrance product	wire ring entrance product
Bee pollen collection quality	Unnecessary small powder (pollen grains) is collected	Large pollen grains are collected according to the size of the ring
The damage of bees when entering	Many damages (e.g. bees legs, wings) <<below picture 1-3>>	Reduced damage (about 70 ~ 80%)
Stay time in entrance	Bottleneck <<below picture 1-1>>	Reduced bottleneck (about 30 ~ 40%)
Bee pollen collection quantity	★ Pollen collection decreases	Pollen collection increases (about 20~30%) <<below picture 2-3>>
Entrance extension	✗ (Impossible) <<below picture 1-2>>	○ (Possible) <<below picture 2-2>>

- The above table shows the results of the interviews of the beekeepers who used both types of pollen traps. The deviation of the results largely depends on the timing, position and size of the bee communities

The damage of bees when entering

When the bees pass the plastic holes <<below picture 1-2>> they coat small powder (pollen grains) on inside of the holes. At this time, small powder is hardened inside the holes and sharpened, causing damage to the bees. While bees rub themselves in a narrow, sharp, wide contact surface on inside of holes to go in and out, they forcefully inflict serious damage to the legs and wings. <<below picture 1-3>>

The decrease in pollen collection

The bees are stuck in the entrance and the stay time is increased due to narrowed and sharp entrance <<above picture 1-1>> And, the total quantity of pollen collection is decreased by reducing of times they go out in a day. The death of bees and the reduction of the amount of pollen can gradually lead to the decline of bee communities.

Plastic entrance product



Wire ring entrance product



BEEFLOWER Pollen Trap



Product Dimensions: 34.8 x 11.4 x 12.7cm (13.7 x 4.5 x 5 inch)

- **Made for Western honeybees(Apis Mellifera)**
→ Made to suit Western honeybee hives, it is designed for the 8-10 frame hives.
- **Block wasps function**
→ The gate without spring modules can be used to prevent wasps from entering the beehive.
- **Easy to store**
→ It's assembled and all parts are contained in the pollen collecting drawer.



• Packing box

• Before Assembly



• The bee hive in the picture is a 10-frame Langstroth bee hive.

▶ All parts can be purchased separately!

BEEFLOWER Wooden Pollen Trap



Product Dimensions: 35 x 21 x 22cm(13.8 x 8.3 x 8.7 inch)

- **Eco-friendly=Bee-friendly**
→ Made of eco-friendly materials such as wood and corrosion resistant.
- **CNC Processing Techniques**
→ Delivered in disassembled state and easy to assemble.
- **Water protection**
→ Longer cover area surrounding the pollen collecting gate, it is possible to collect pollen when it rains.
- **Moisture problem improvement**
→ Made from corrosion resistant aluminum mesh at the bottom of the pollen collecting drawer.



Using the existing stainless steel wire doorway gate, which is a key component!



• When you don't collect bee pollen, you can keep pollen collecting gate in the pollen trap like this!



• The bee hive in the picture is a 10-frame Langstroth bee hive.

▶ All parts can be purchased separately!

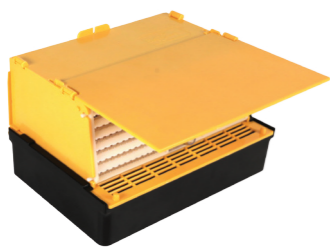
BEEFLOWER Small Pollen Trap



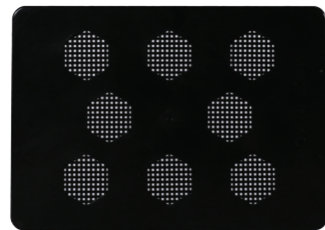
Product Dimensions: 23.5 x 17 x 14cm (9.3 x 6.7 x 5.5 inch)

- A small pollen trap for a small species of honeybee and hive!
- A rain protector that can be detachable and stored in the pollen collecting drawer!
- Moisture problem is improved through ventilation holes on the bottom of the pollen collecting drawer.
- Only the width of the existing pollen trap is reduced, and the length and height of the drawer is longer, so more bee pollen can be stored in the drawer.
 - If there is an entrance reducer, it can also be used for a 10-frame beehive.
- Easy to store
 - It's assembled and all parts are contained in the pollen collecting drawer.

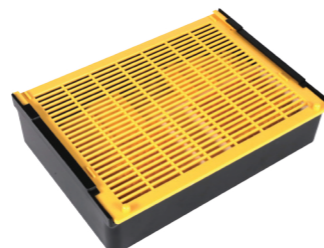
Using the existing stainless steel wire doorway gate, which is a key component!



• Attachment type rain protector



• The bottom of the drawer



• Before Assembly



• Packing box



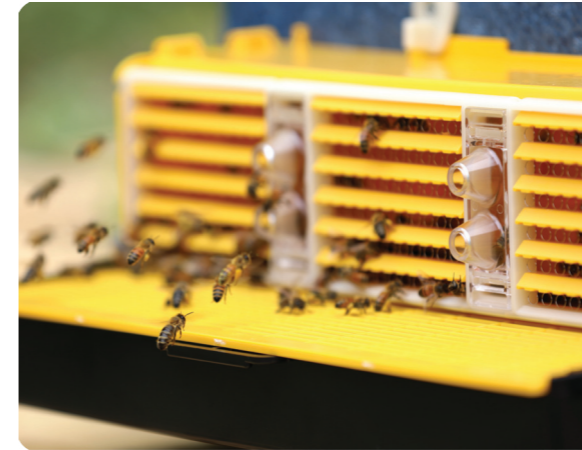
• Apis cerana Bee Hive



• 10-frame Langstroth Bee Hive

▶ All parts can be purchased separately!

Product Field Test



About us

We are a manufacturer of Pollen trap with high strength stainless steel wire entrance. All components are made in South Korea and we are doing all of the things such as R&D, producing and selling. The spring is the core component of our pollen trap and we manage a spring manufacturer separately. We will pursue the coexistence of bees and humans and continue to develop products.

Certificate



• Certificate of Design Registration



• Certificate of patent



• China Utility Model Registration